

CH horizontal plate lifting clamps

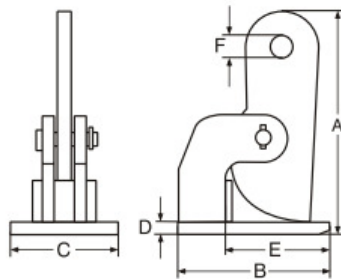
H



Lifting clamps for safe transportation of steel plates in horizontal position.

Properties

- For hoisting steel plates up to hardness 37 RC (345 HB).
- Rated load capacity and size of jaw opening are clearly shown on lifting clamps.
- Suitable for lifting non-bending steel plates and transportation them in horizontal position.
- These clamps can also be used directly under a traverse squared to them.
- Always must be used in pairs.
- Low weight and compact design.
- Safety factor min. 5 x rated load capacity.
- Each plate lifting clamp is subject to test load at 2 x rated load capacity.



type	ref. no.	safety working load per pair (kg)	jaw opening (mm)	dimensions in mm						weight per pair (kg)
				A	B	C	D	E	F	
CH - 1.0	3365001	1.000	0 - 35	185	140	65	10	100	25	4.8
CH - 2.0	3365002	2.000	0 - 60	274	180	80	15	150	31	12.0
CH - 2.0/L	3365102	2.000	0 - 100	344	180	80	15	150	31	14.0
CH - 4.0	3365004	4.000	0 - 60	279	222	90	20	185	31	22.0
CH - 4.0/L	3365104	4.000	0 - 100	360	222	90	20	185	31	26.0
CH - 6.0	3365006	6.000	0 - 60	284	222	90	25	185	31	23.0
CH - 6.0/L	3365106	6.000	0 - 100	375	222	90	25	170	31	27.0
CH - 8.0	3365008	8.000	0 - 60	327	225	120	30	170	31	32.0
CH - 8.0/L	3365108	8.000	0 - 100	417	225	120	30	170	31	34.0
CH - 10.0	3365010	10.000	0 - 60	332	225	120	35	170	31	34.0
CH - 10.0/L	3365110	10.000	0 - 100	450	225	120	35	170	45	38.0

